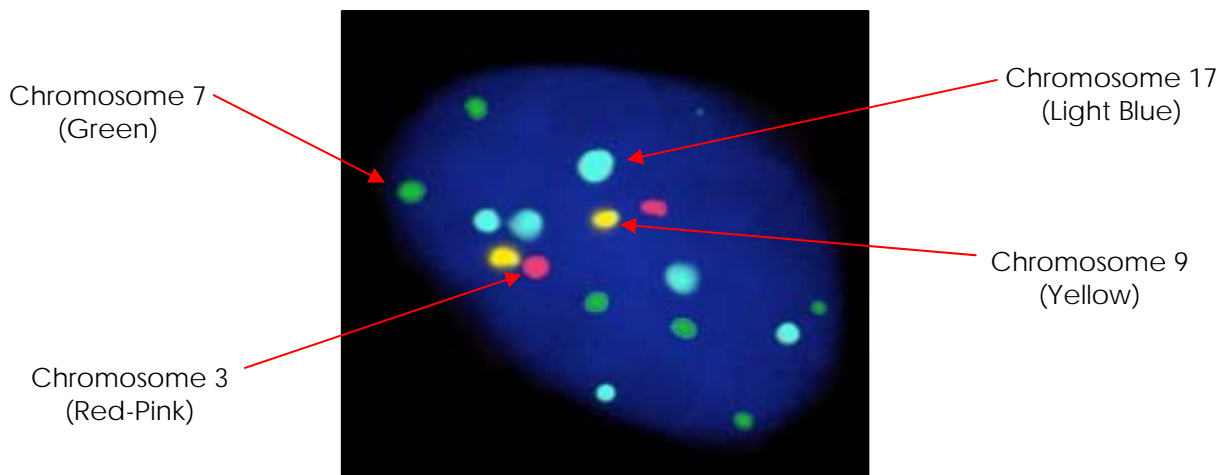


UroVysion FISH

DIAGNOSIS DEFINED

UroVysion FISH

The UroVysion Bladder Cancer test is designed to detect aneuploidy for chromosomes 3, 7, 17, and loss of the 9p21 locus via fluorescence in situ hybridization (FISH) in urine specimens from persons with hematuria suspected of having bladder cancer. Results from the UroVysion test are intended for use as an aid, in conjunction with cystoscopy, for initial diagnosis of bladder carcinoma in patients with hematuria and subsequent monitoring for tumor recurrence in patients previously diagnosed with bladder cancer. ¹



UroVysion FISH of a bladder carcinoma cell

Comparison of Sensitivity – UroVysion and Urine Cytology

Sensitivity (%) by Stage		
Stage	UroVysion	Urine Cytology
TaG1	55%	20%
TaG2,3	83%	33%
T1	83%	67%
T2	100%	33%
Tis	100%	33%

Sensitivity (%) by Grade		
Grade	UroVysion	Urine Cytology
1	55%	18%
2	78%	44%
3	94%	41%

High sensitivity translates into fewer false negatives

¹ Abbott - UroVysion