

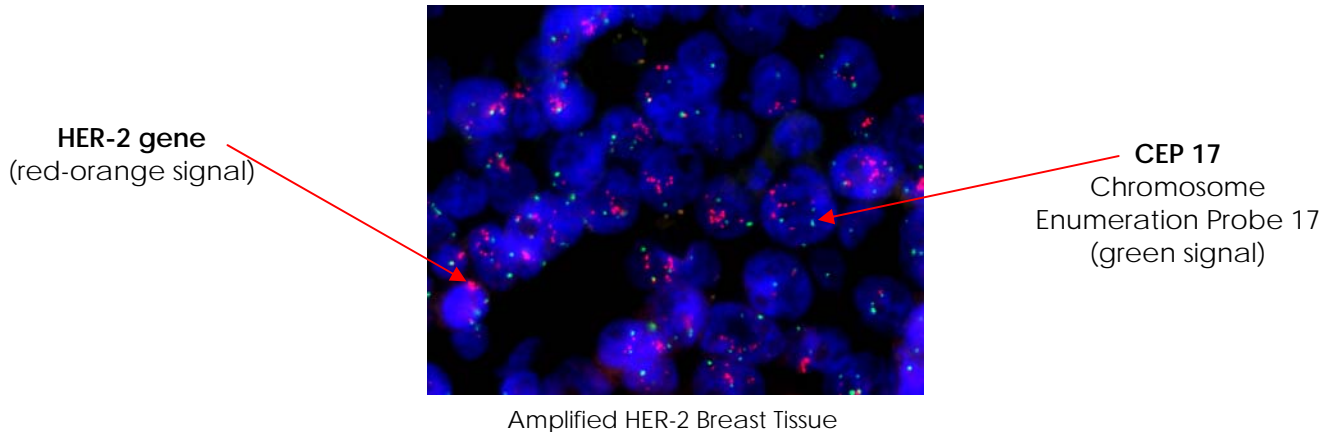
HER-2 /neu FISH (PathVysion)

DIAGNOSIS DEFINED

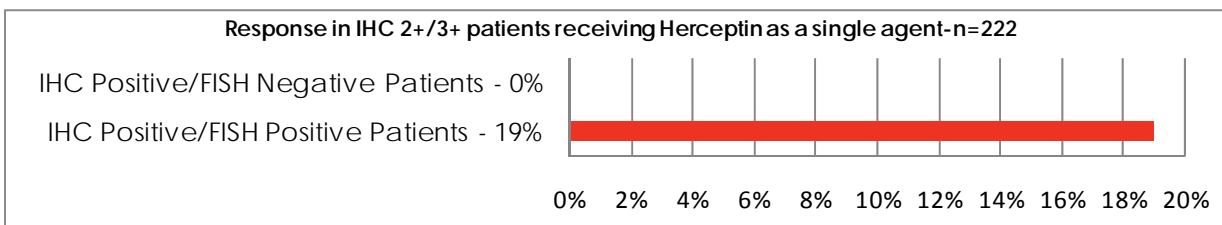
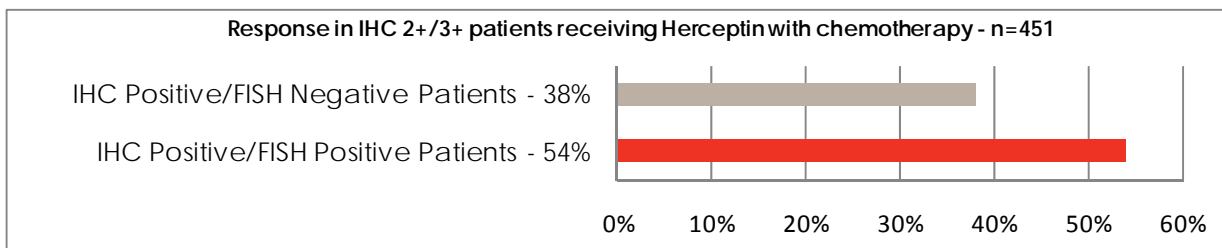
HER-2/neu FISH (PathVysion)

The HER-2/neu FISH test is a vital tool in determining prognosis, and assisting with adriamycin-based chemotherapy selection and Herceptin® (Trastuzumab) monoclonal antibody therapy selection for patients with breast cancer.

PathVysion direct labeled FISH probes yield definitive results at the molecular level. The test uses fluorescent probes to "paint" the HER-2 genes in the tumor cell nucleus, to see if the number of gene copies is normal or not.



Highest Herceptin Response Rates Seen In FISH Positive Patientsⁱ



Applied Diagnostics' reports include the correlation of ACIS IHC scores with FISH Results

ⁱ Herceptin Pivotal Trial Data