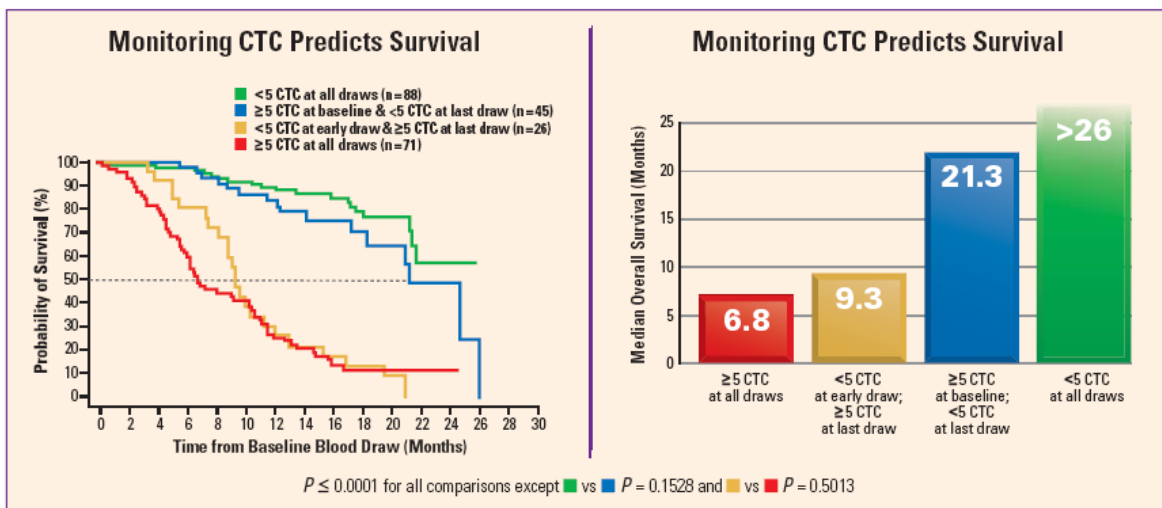


For metastatic prostate cancer...

**DIAGNOSIS DEFINED**

## Now you can monitor the progress of your patients with metastatic prostate cancer (MPC) at any time

The Circulating Tumor Cell (CTC) Test provides predictive and prognostic information throughout the continuum of care<sup>1</sup>



A reduction in CTC below 5 after initiation of therapy predicts longer overall survival (OS); an increase in CTC count to 5 or above predicts shorter OS

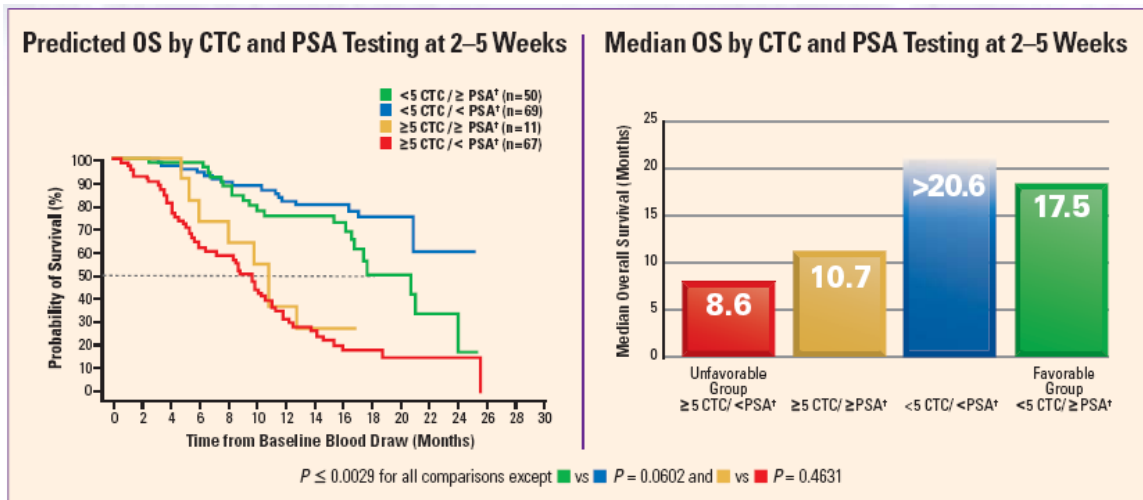
- At any time point, the median OS was significantly longer for patients with <5 CTC compared with patients with  $\geq 5$  CTC<sup>1</sup>
- Changes in CTC also predict significant changes in progression-free survival (PFS)<sup>1</sup>
- In a clinical study of 231 patients with MPC:
  - ✓ Only patients with metastatic disease showed significant levels of CTC<sup>1</sup>
  - ✓ 57% of patients had  $\geq 5$  CTC at baseline<sup>1</sup>

**The CTC Test is also indicated for monitoring patients with metastatic breast and metastatic colorectal cancer**



For metastatic prostate cancer (MPC)...

## The CTC Test results provide new insights into disease status and prognosis



†30% PSA Reduction

- Favorable CTC at any time point are more accurate than the PSA evaluation<sup>1</sup>
- In cases where CTC and PSA were discordant, CTC provided a more accurate assessment of prognosis<sup>1</sup>

## The Combination of CTC measurement and PSA testing provides a more accurate assessment of disease status<sup>1</sup>

Reference: 1. Instructions for Use. Veridex, LLC