

For metastatic breast cancer...

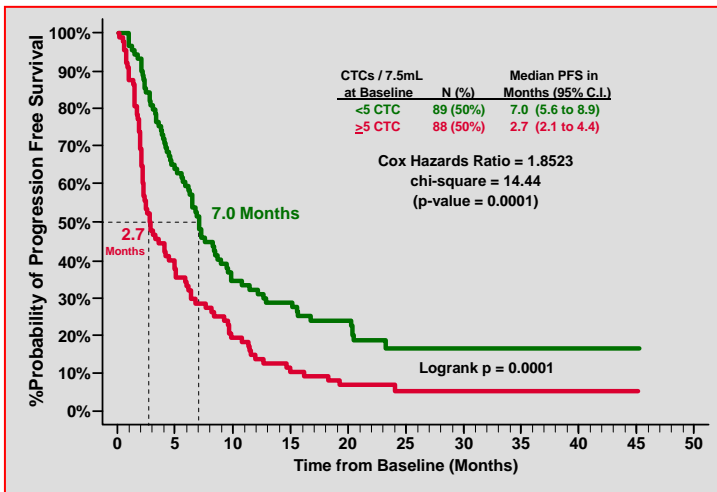
DIAGNOSIS DEFINED

The Circulating Tumor Cell (CTC) Test provides predictive and prognostic information

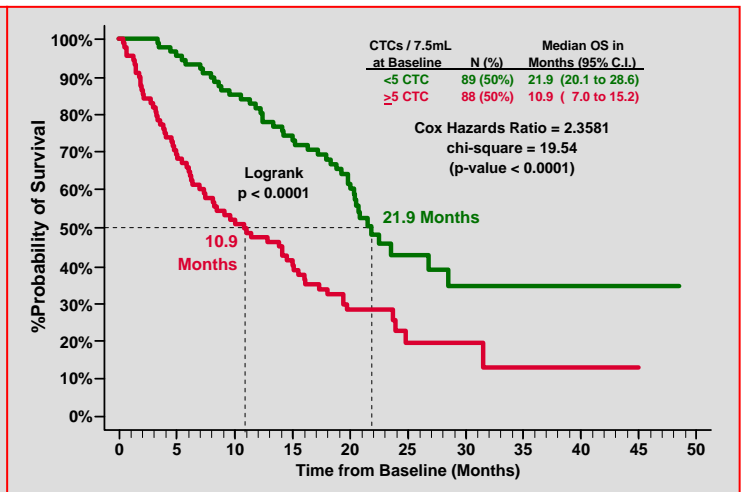
The Circulating Tumor Cell Test is intended for the enumeration of circulating tumor cells of epithelial origin in whole blood. A CTC count of 5 or greater immediately prior to the initiation of therapy is predictive of shorter PFS and poorer OS

PROGNOSTIC VALUE

Progression Free Survival of Patients with <5 or ≥5 CTC at Baseline



Overall Survival of Patients with <5 or ≥5 CTC at Baseline



PFS and OS at Baseline

CTCs in 7.5 mL of blood	Probability of Survival	PFS (months)	OS (months)
< 5	at 50%	7	21.9
≥ 5	at 50%	2.7	10.9

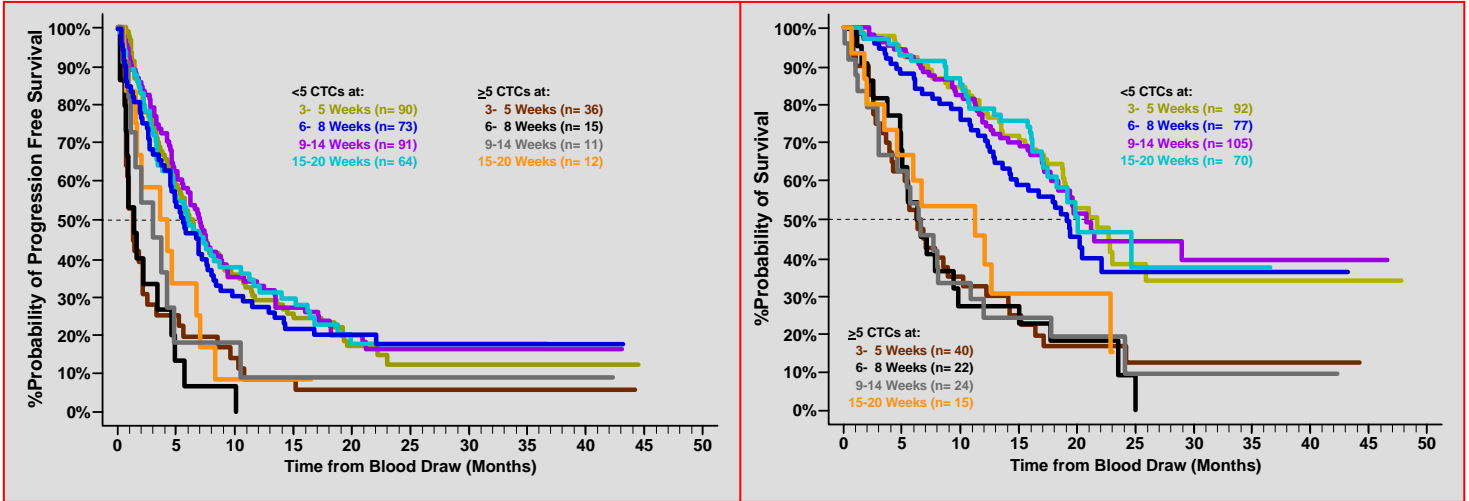


A CTC count of 5 or greater following 3 – 5 weeks of therapy is predictive of shorter PFS and OS

PREDICTIVE VALUE

Progression Free Survival of Patients with <5 or ≥5 CTC at Different Times of Follow-Up

Overall Survival of Patients with <5 or ≥5 CTC at Different Times of Follow-Up



PFS and OS at 3-5 Weeks Follow-Up

CTCs in 7.5 mL of blood	Probability of Survival	PFS (months)	OS (months)
< 5	at 50%	~6.1	~21
≥ 5	at 50%	~1.3	~6.3

Clear separation of favorable and unfavorable populations at each time point even after 45-months of follow-up

- ✓ The test can be used at any time-point
- ✓ Strong predictive tool at any time-point
- ✓ All from a simple blood test