

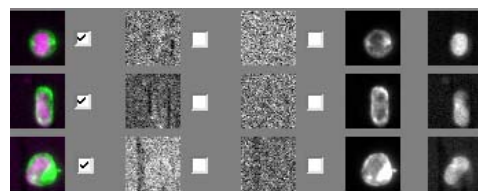
## DIAGNOSIS DEFINED

### Circulating Tumor Cells (CTC)

The Circulating Tumor Cell (CTC) analysis can detect the presence of Circulating Tumor Cells in the peripheral blood of metastatic breast cancer in patients. A count of CTC of 5 or more in 7.5 mL of blood is predictive of shorter progression free survival and overall survival.

**Turnaround Time** - 1-2 Days

### Specimen Requirements and Precautions



- Samples can **ONLY** be collected in **CellSave tubes**. The preservative is essential for the stability of circulating tumor cells, if present.
- Draw CellSave tube **PRIOR** to the administration of IV therapy.
- Fill one tube with 10 ml. of blood and immediately mix by gently inverting the tube 6-8 times to prevent clotting.
- Store at room temperature (15-30C) until processing.
- Protect sample from extreme temperature during shipping/transport.
- Samples must be processed within 72 hrs. of collection.
- Patients on **Doxorubicin** (Adriamycin) must wait at least seven (7) days after administration to draw sample for CTC test.
- Don't use samples which have been clotted.

**DO NOT REFRIGERATE OR FREEZE SPECIMENS** for CTC testing.